

# MONTHLY MEMBERSHIP PROGRESS REPORT

District 20 E2

Results as of: 3/31/2026

GMT:

LOCATION NEW YORK

GMT CA

| Clubs                 |               |           |               |
|-----------------------|---------------|-----------|---------------|
| RESULTS FOR 2025-2026 |               |           |               |
| QUARTER               | NEW CLUB GOAL | NEW CLUBS | DROPPED CLUBS |
| JULY/AUG/SEPT         | 0             | 0         | 1             |
| OCT/NOV/DEC           | 1             | 0         | 0             |
| JAN/FEB/MAR           | 0             | 0         | 0             |
| APR/MAY/JUNE          | 0             | 0         | 0             |

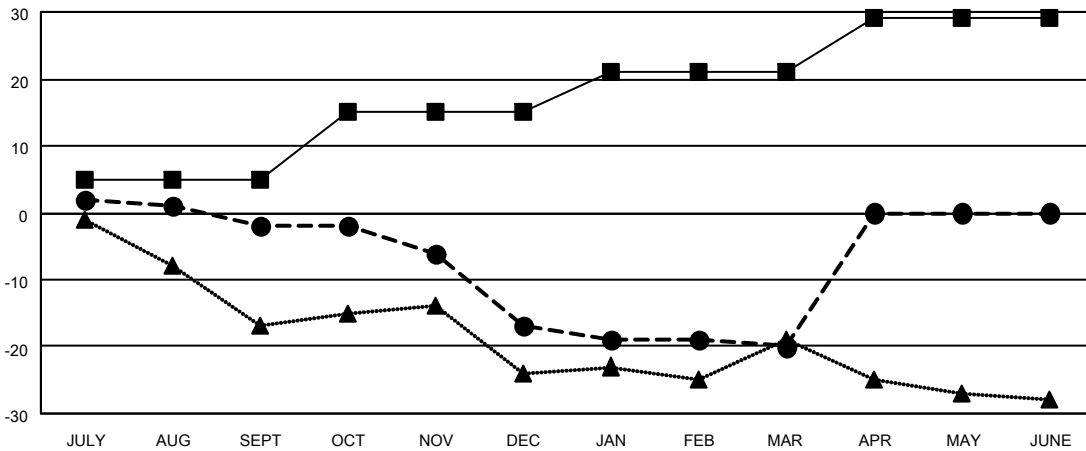
| Members               |                        |                      |  |
|-----------------------|------------------------|----------------------|--|
| RESULTS FOR 2025-2026 |                        |                      |  |
| QUARTER               | MEMBER GROWTH NET GOAL | MEMBER GROWTH ACTUAL | DROPPED MEMBERS ACTUAL (including transfers) |
| JULY/AUG/SEPT         | 5                      | 12                   | 13   |
| OCT/NOV/DEC           | 10                     | 14                   | 29   |
| JAN/FEB/MAR           | 6                      | 14                   | 16   |
| APR/MAY/JUNE          | 8                      | 0                    | 0  |

GOALS AND ACTUAL NEW CLUBS CUMULATIVE



- - CURRENT YEAR GOALS FOR NEW CLUBS
- - CURRENT YEAR ACTUAL NEW CLUBS
- ▲ - LAST YEAR ACTUAL NEW CLUBS

GOALS AND ACTUAL MEMBERS CUMULATIVE



- - MEMBER GROWTH NET GOAL
- - MEMBER GROWTH ACTUAL
- ▲ - LAST YEAR MEMBERSHIP ACTUAL

|                        |   |                                    |
|------------------------|---|------------------------------------|
| DROPPED CLUBS: 1       | 17 CLUBS OF 35 ADDED 1 OR MORE NEW MEMBERS                | <b>GENDER DISTRIBUTION</b>         |
|                        |   | MALE 459 (56.88%)                  |
|                        |   | FEMALE 348 (43.12%)                |
| <b>DROPPED MEMBERS</b> | <a href="#">CLICK HERE FOR CUMULATIVE MEMBERSHIP DATA</a> | TOTAL FAMILY UNIT MEMBERS 158      |
| DECEASED 18            |   | FAMILY MEMBERS PAYING HALF DUES 79 |
| CLUB CANCELLED 0       |   |                                    |
| OTHER 40               |   |                                    |
| <b>TOTAL 58</b>        |   |                                    |